



Response to RFI No. One

Date: September 25, 2013

Project: **Tampa Palms Clubhouse Meeting Facility**
16101 Compton Drive
Tampa, Florida 33647

Ha. Project No. 13017

To:	Dave Hollowell	TPOA Building Committee
	Maggie Wilson	TPOA Building Committee
	Jason Rinard	Hardeman-Kempton
	Victor Huggins	Hardeman-Kempton
	Eric S. Gordon	J.O. DeLotto and Sons, Inc.
	Mike Maiolo	Wichman Construction
	Jennifer Burnside	CRS Building Corporation

The following RFI questions were submitted Hartmann Architecture by Wichman Construction. Our responses are provided in bold text.

1. Do you have a spec for the automatic door opener required for this door? Do you want operators on both doors?

Response: Yes, provide opener for both leafs of the double door. Please see the attached information on a Horton Automatic Door Opener, Easy Access Series 7100/Surface Applied with Horton Push Plates, C1260-4 (Engraved).

2. Is the replacement concrete at the paver area at the existing building to receive the colored concrete?

Response: Yes.

3. Are bathroom mirrors to be provided by GC? Calls out "local vendor".

Response: No, provided by Owner, installed by GC. They will be wood framed mirrors.

4. Is the "kitchen equipment" specified on A401 by GC or owner?

Response: Provided by Owner, installed by GC.

5. I see granite top selection has not been determined. Will a Level 1 group be acceptable or are you looking for an allowance on material?

Response: Calculate your Bid on a \$ 65/SF installed Allowance Cost.

6. The Door schedule indicates the aluminum gates to be Kynar "yellow". Are the tube screen walls to be this color as well?

Response: Yes. The aluminum tubular grid wall at the Breezeway, the two aluminum tubular grid gates at the Breezeway, the aluminum tubular grid railing and gate at the south end of the building are all to have a Kynar finish and at this time it is to be a yellow color. Final color determination will be by Owner.

5706
S. MacDill Ave.
Suite A
Tampa, Florida
33611

t 813.251.2190
f 813.251.2191

AA 26000662

Tampa Palms Meeting Facility

Compton Park

RFI No. One Responses

September 25, 2013

Page 2 of 2

End of Response to RFI No. One

The preceding is our understanding of the items discussed and/ or conclusions reached. If you have any corrections or additions to this memorandum, please notify our office in writing. Thank you.

Ha.

Respectfully submitted,

Hartmann Architecture, Inc.

Richard Hartmann, AIA, LEED AP

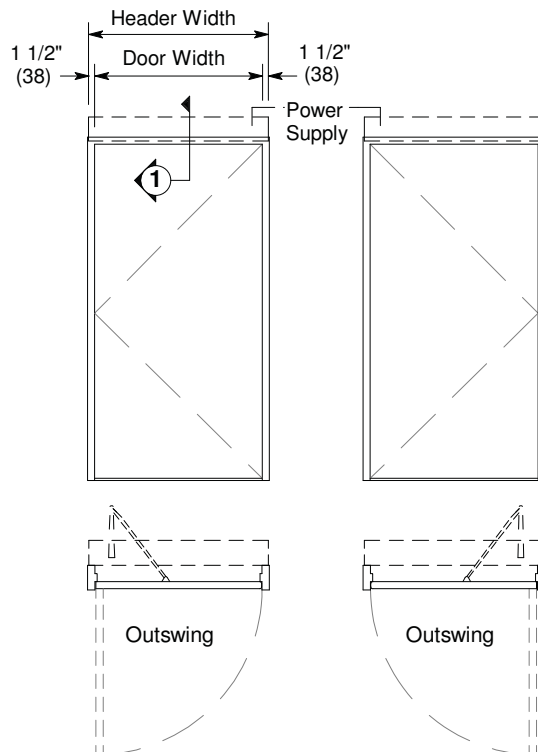
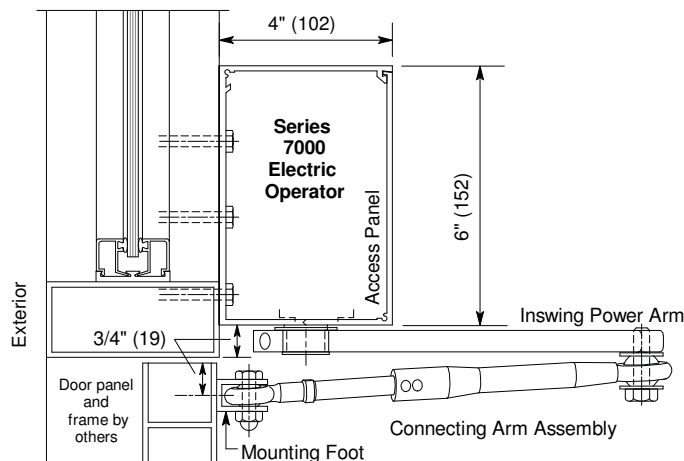
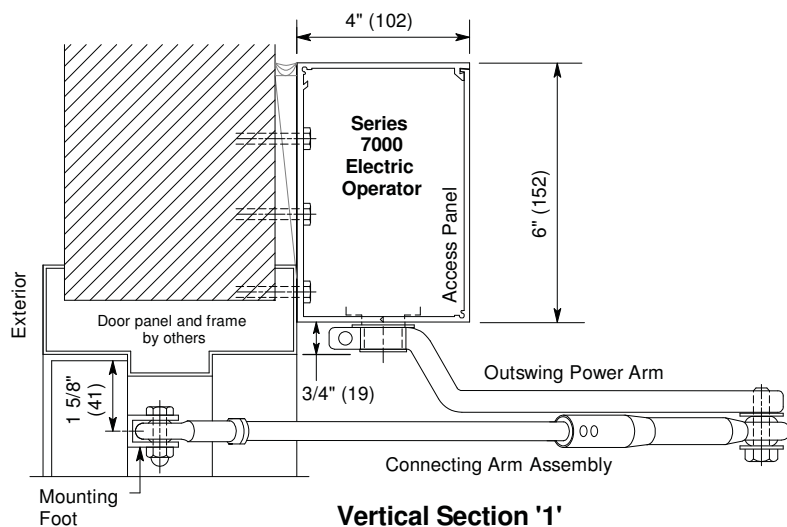
Standard Packages

Single Units		Pair Units	
Types: LH, RH, LHR, RHR		Types: LH-RH, LHR-RHR	
Door Width	Header Width	Door Pair Width	Header Width
3'-0" (914)	3'-3" (991)	5'-0" (1524)	5'-3" (1600)
3'-6" (1067)	3'-9" (1143)	6'-0" (1829)	6'-3" (1905)
		7'-0" (2133)	7'-3" (2210)
Anodized Finish: Clear or Dark Bronze			

For additional equipment information see Architectural Specs starting on p. B9.0.

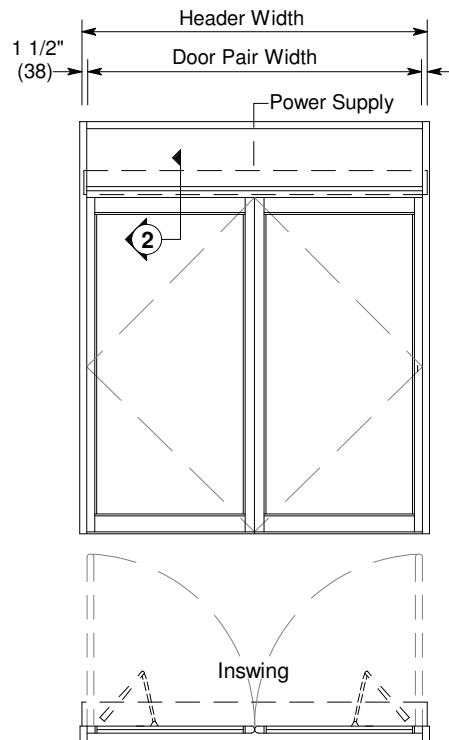
Installation and Operation

- Swing door header is surface mounted onto frame and connecting arm assembly is mounted to face of door panel. Frame and door panel to be provided by others(see p.B1.2).
- Electrical: Provide 120 VAC , 60 cycle, single phase, 15 amp service (in conduit) to each swing door unit on a dedicated 20 amp circuit breaker routed into header. Maximum current draw is 3.15 amps.
- Unit to be actuated by push plate or push button switch mounted on each side of opening for two-way traffic (see p. B1.4).



Single Units Floor Plans with Elevations

LHR & RHR shown. LH & RH are Inswing



Pair Unit Floor Plan with Elevation

LH-RH shown. LHR-RHR is Outswing

Push Button and Push Plate Switches

E2.4
Jan 08

C520 -

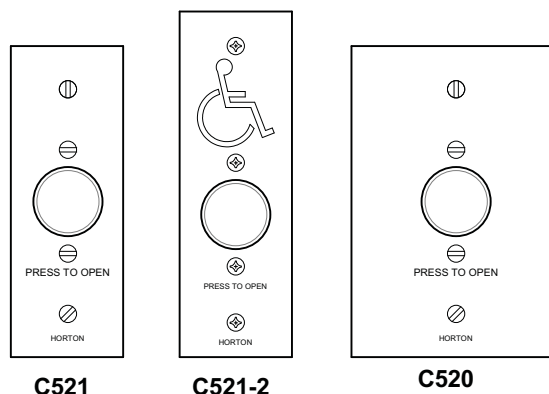
Wall mounted. Black face plate with a red button.
2 3/4" x 4 1/2" (70 x 114).

C521 -

Jamb mounted. Black face plate with a red button.
1 3/4" x 4 1/2" (44 x 114).

C521-2 -

Jamb mounted. Black face plate with a red button.
1 3/4" x 5" (44 x 127).



C521

C521-2

C520

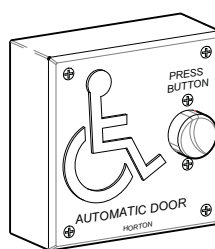
For use on all products

C1315-2 -

For use on handicap designated openings.
Momentary contact microswitch assembly with 1" (25) diameter red button with junction box.
Junction box is 4" (102mm) square x 1 1/2" (38) deep, molded plastic with 1/8" (3) thick blue plastic cover with raised white lettering and handicap logo. This unit may be surface mounted on the wall or a post.

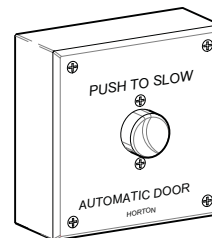
C9616 -

"Push to Slow" button for revolving doors.
Same as C315-2 except for engraving on face cover.



C1315-2

For use on slide, swing and folding

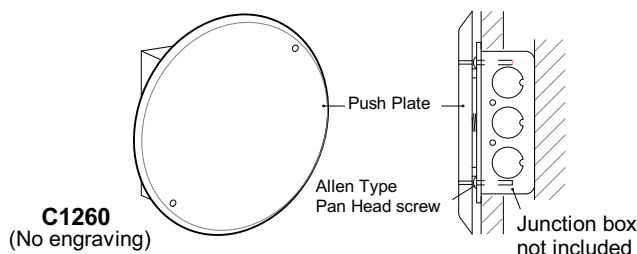


C9616

For use on revolving doors

C1260 (Plain) -

6 1/4" (159) diameter brushed stainless steel push plate and microswitch assembly with momentary contact.
Assembly mounts to standard junction box, 4" (102) square x 1 1/2" (38) deep (not included) with four allen types screws (included) which are accessible through two holes in the front face of the push plate.



C1260
(No engraving)

C1260-1, 3 & 4 (Engraved) -

The plate can be engraved with the international handicap symbol and/or a message as shown (engraved symbol and letters colored blue).



C1260-1



C1260-3



C1260-4



C1260-5

For use on slide swing and folding

If Radio Control required, specify with "RC" behind item number. See next page for Transmitter and Receiver.